

# A New Zealand / International Perspective



Shanthi Ameratunga  
School of Population Health  
University of Auckland

[s.ameratunga@auckland.ac.nz](mailto:s.ameratunga@auckland.ac.nz)

10182

The most explosive  
and influential best  
seller of the decade!

ORIGINALLY

~~\$5.95~~

NOW ONLY

\$1.00

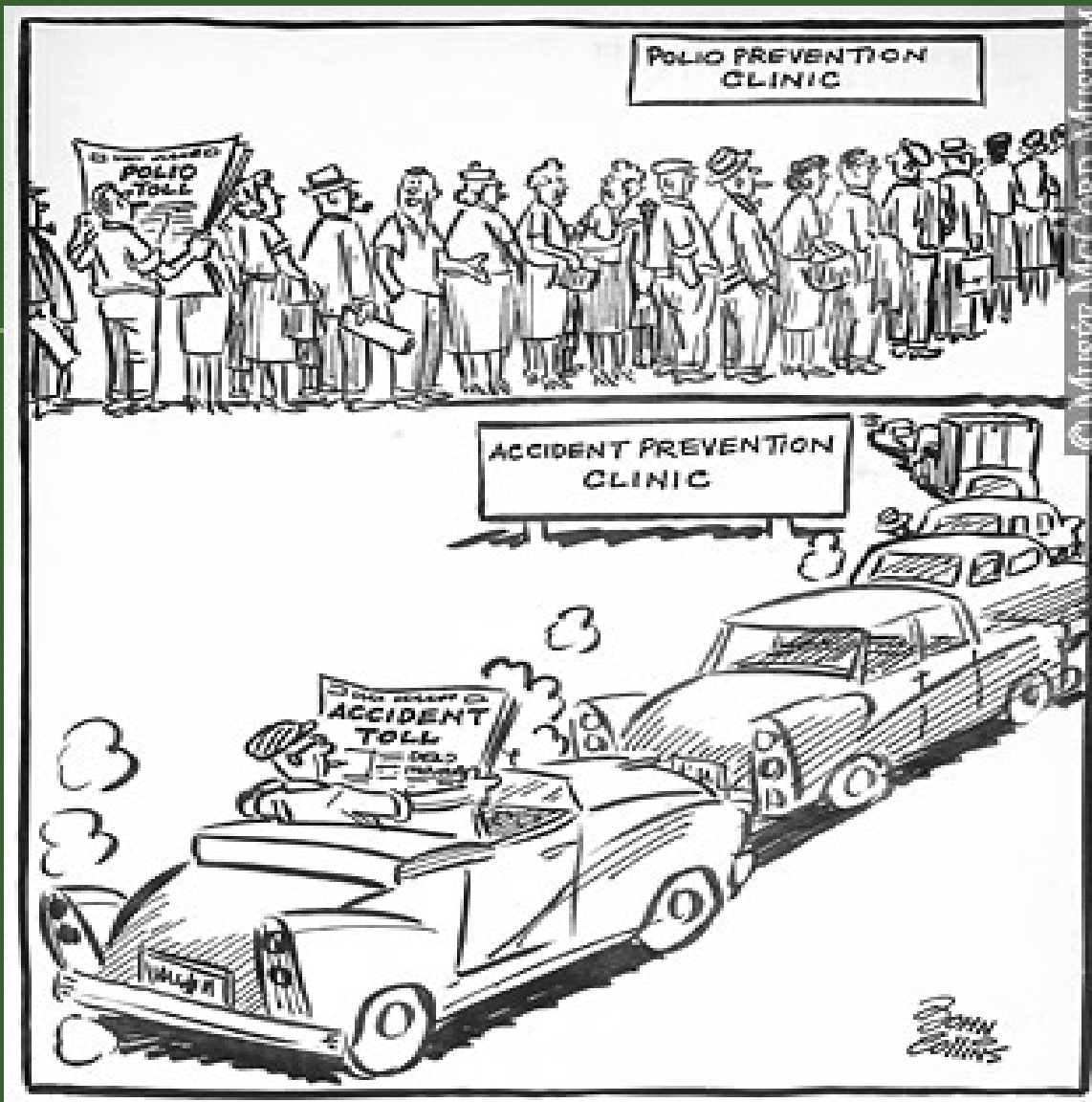
# UNSAFE AT ANY SPEED

The Designed-In Dangers  
of  
the American Automobile



**RALPH NADER**

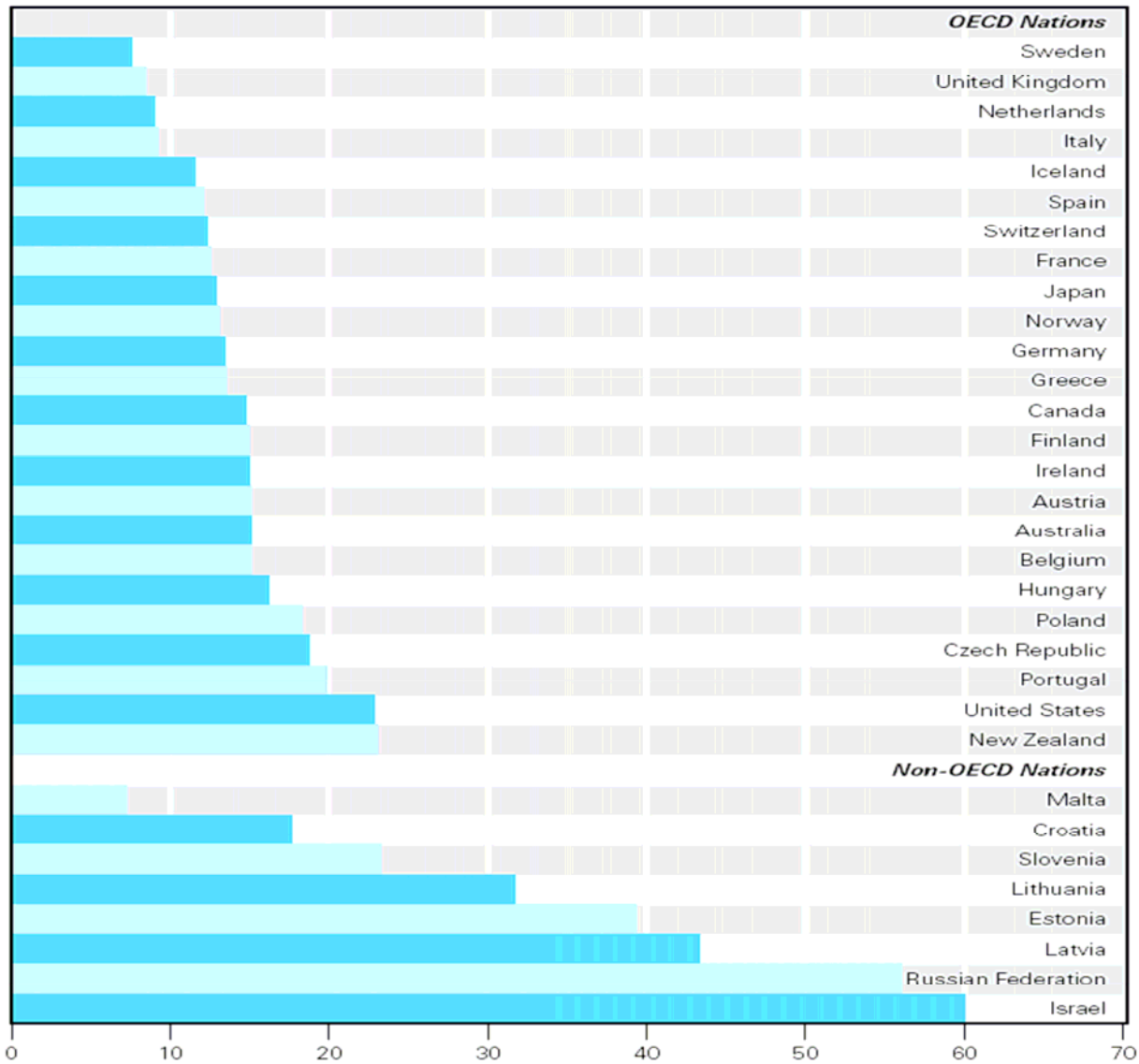
"Insidiously, topical and terrifying... a slashing, fully documented indictment of industrial irresponsibility, governmental default, public apathy... a shattering exposé of the automobile industry."



© MUSEUM OF MODERN ART

*Too bad we can't have shots for this too!*  
John Collins, 1959

**Figure 2.3** Deaths from accidents and injuries per 100,000 under 19 years  
(average of latest three years available)



....the ultimate reward of trauma surgery is the opportunity to restore the previously healthy individual to a productive life after sustaining a devastating injury from a random unanticipated moment of human error.

Ernest Moore, *J Trauma* 1995

....the ultimate reward of trauma surgery is the opportunity to restore the previously healthy individual to a productive life after sustaining a devastating injury from a **random unanticipated moment of human error.**

- NHS algorithm for case finding of patients at risk of admission to hospital
- Injury admissions excluded

“Clearly, a large proportion of hospital admissions cannot be prevented or avoided.... For example, most major trauma is generally not preventable or avoidable”

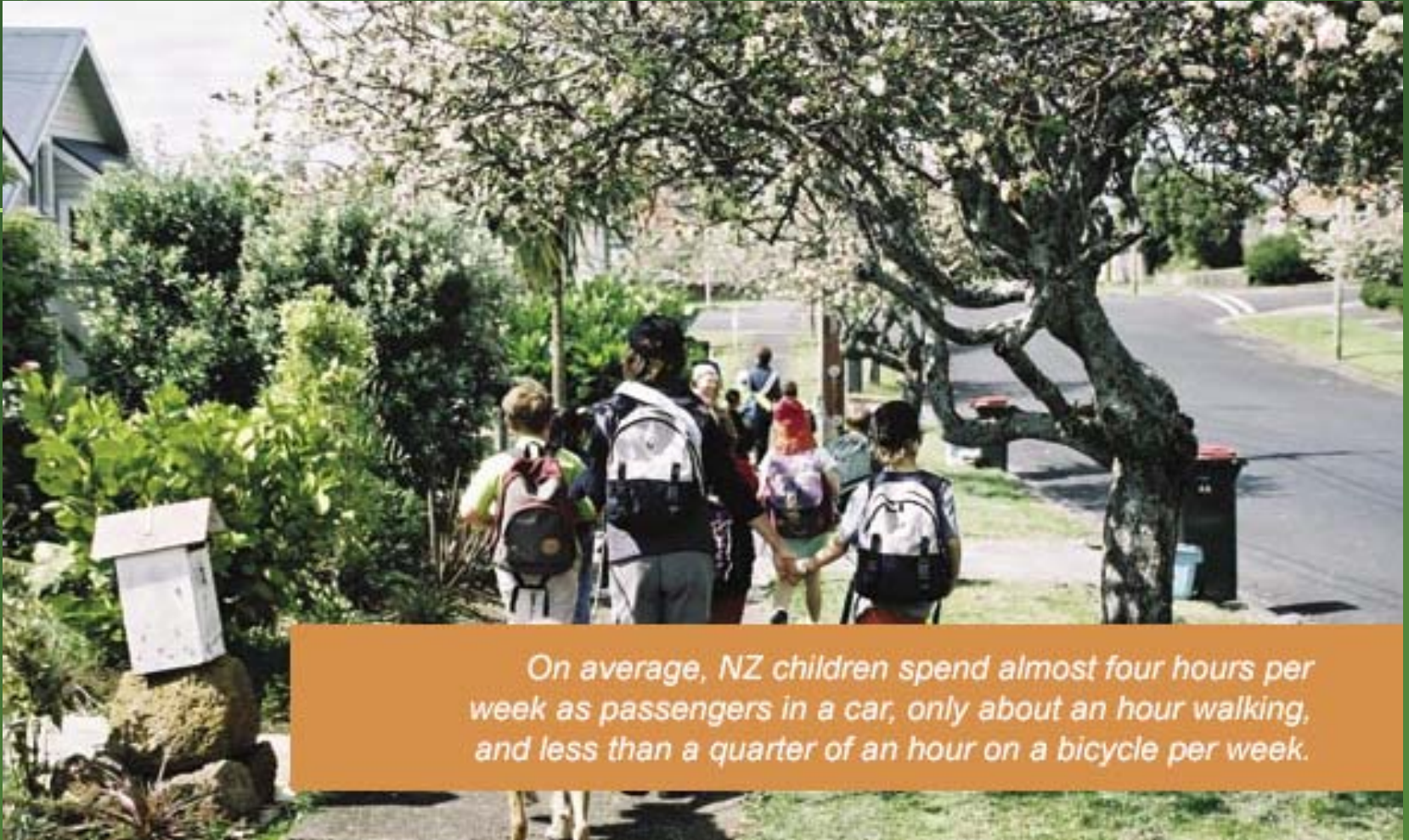
Billings, et al. BMJ 2006



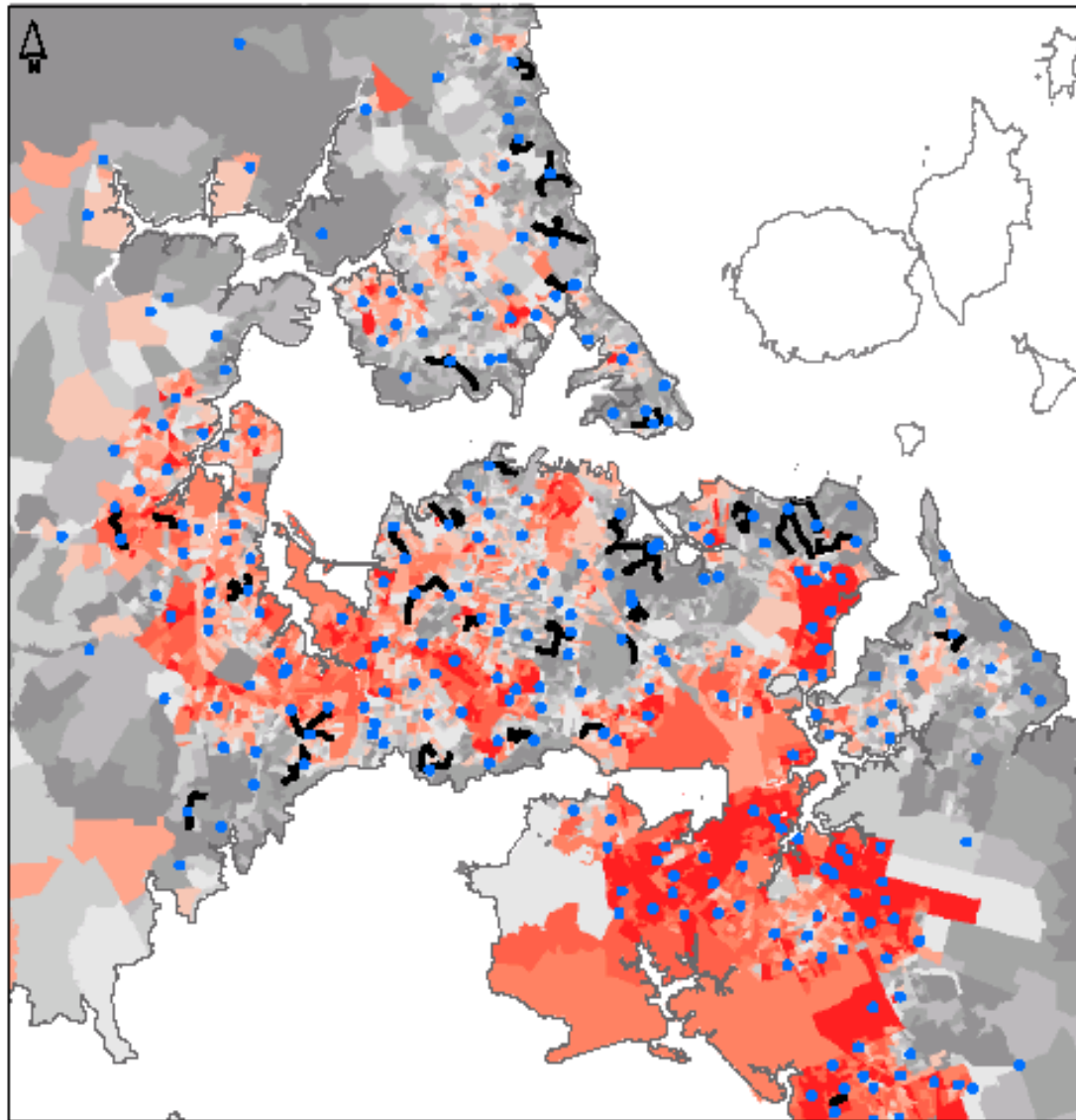


Adding highway lanes  
to deal with traffic  
congestion is like  
loosening your belt  
to cure obesity.

Lewis Mumford

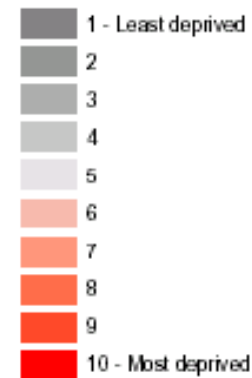


*On average, NZ children spend almost four hours per week as passengers in a car, only about an hour walking, and less than a quarter of an hour on a bicycle per week.*



Map of 2001 deprivation index with Auckland's walking school bus routes.

**Deprivation Score**



- Primary schools
- WSB routes

# Inverse care law

The availability of good medical care tends to vary inversely with the need for the population served.

Julian Tudor Hart, 1971

- Almost 1 million deaths per year
- >90% of injury deaths in poorer countries
- Effective interventions exist
- Governments must act
- **Injuries are a health problem**







A child is born into an utterly undemocratic world.

He cannot choose his father and mother.

He cannot pick his sex or colour, his religion, nationality, or homeland. Whether he is born in a manor or manger, whether he lives under a despotic or democratic regime, it is not his choice.

From the moment he comes, close-fisted, into the world, his fate lies in the hands of his nation's leaders.

It is they who will decide whether he lives in comfort or despair, in security or in fear. His fate is given to us to resolve – to the Presidents and Prime Ministers of countries, democratic or otherwise.